

ART & GLOBAL HEALTH CENTER

AFRICA

Harnessing the Transformative Power of the Arts

ANNUAL REPORT
2022

Table of Contents

03	Abbreviations
04	About ArtGlo
05	Letter from the Executive Director and Board Chair
07	Gender Justice
12	Youth and Community Engagement
17	Social Inclusion and Diversity
22	Financial Summary
23	Way forward
24	ArtGlo Team

Abbreviations

ADC	Area Development Committees
ArtGlo	Art and Global Health Center Africa
CAP	Community Action Plans
CBO	Community-Based Organisation
CSE	Comprehensive Sexuality Education
CSO	Civil Society Organisation
EVAWG	Ending Violence Against Women and Girls
GBV	Gender-Based Violence
MICGBV	Malawi Irish Consortium on GBV
NGO	Non-Governmental Organisation
TfD	Theatre for Development
VAWG	Violence Against Women and Girls
LGBTI	Lesbian, Gay, Bisexual, Transgender And Intersex
SRHR	Sexual and Reproductive Health and Rights
PLWD	People Living With Disabilities
HCD	Human-Centered Design
NCDs	Non-Communicable Diseases
DBU	Development Broadcasting Unit
TAs	Traditional Authorities
VDC	Village Development Committees
SGBV	Sexual and Gender-Based Violence
SALC	Southern Africa Litigation Center

ABOUT ARTGLO

WHAT WE DO AND HOW WE DO IT

To achieve our goals, ArtGlo is committed to complementing the efforts of the Malawian government and other key stakeholders in achieving the Malawi 2063 Vision and the Sustainable Development Goals. We believe that by leveraging our participatory arts approaches, we can partner with organizations that have strong technical skills in emerging issue areas. This will enable us to broaden our impact while continuing to develop and strengthen our expertise in focus areas where we have significant experience. Our impact and track record over the last 10 years is there for everyone to see. ArtGlo has established itself as a leader in community engagement using participatory arts, Umunthu philosophy and Human-Centered Design methodologies.

Mission

ArtGlo harnesses the power of the arts to nurture creative leadership and to ignite bold conversations and actions

Partnerships and collaboration

We use partnerships and collaboration at multiple levels to advance our work, and to ensure that our creative approaches can add value to the strengths of other organisations

Human-Centered Design (HCD)

We use Human-Centred Design (HCD) approaches in our programming, and train grassroots organisations to use HCD in their work with communities.

Participatory Arts

We use participatory arts to enable shared ownership of decision-making processes and generate dialogue, social activism, and community mobilization.

Community voices

ArtGlo continually invested in amplifying community voices, enabling them to be heard and to inform decisions at community, national and regional level. This included using participatory arts approaches to train and support community-based organisations and key populations including marginalised women, girls and young people, LGBTQI+ people and people living with HIV/AIDS channel their voice and tell their stories.

Vision

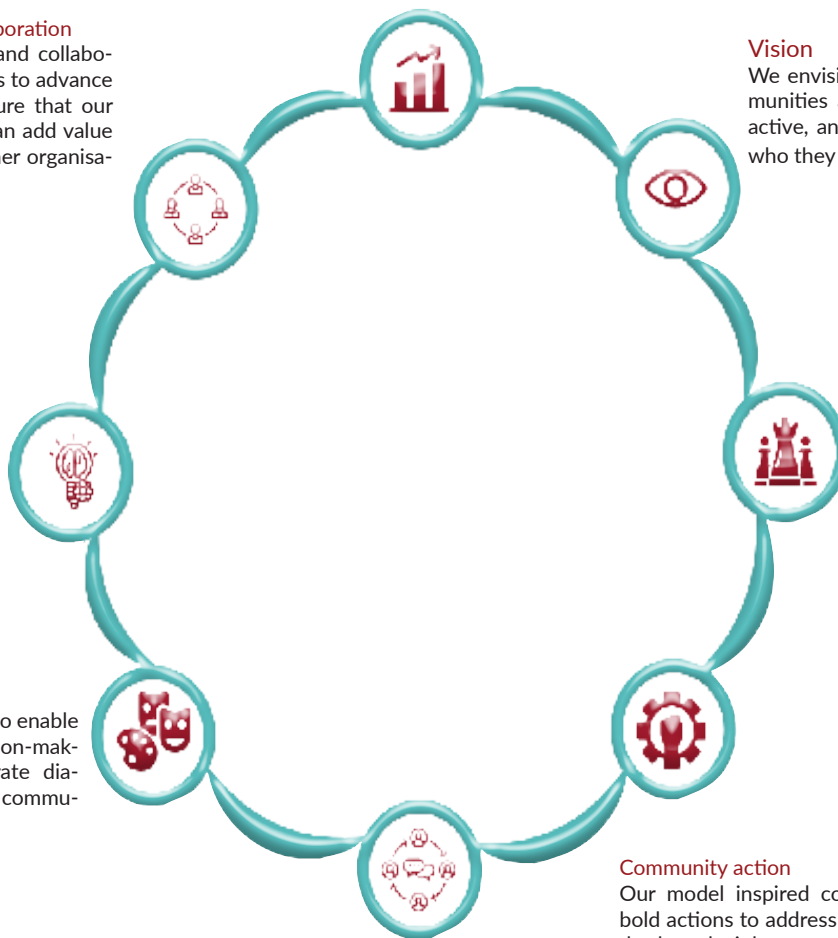
We envision a world where communities are healthy, open, and active, and people are free to be who they are.

Community Leadership

Community voice and action are realised through community leadership. ArtGlo supported the growth and development of local leaders to tackle local problems. Through our Students with Dreams programme, we supported hundreds of young people to start social impact projects, businesses and contribute to sustainable development. Our work with community-based organisations was built on skills exchange and knowledge nourishment which enhanced their capacity to lead and drive change.

Community action

Our model inspired communities to take bold actions to address issues such as gender-based violence and inequality, public service delivery, discrimination and exclusion, lack of access to health services, as well as economic vulnerability. ArtGlo supported communities to co-create multi-stakeholder community action plans which were community-led, community-funded and leveraged on existing resources and knowledge.



LETTER FROM THE EXECUTIVE DIRECTOR AND BOARD CHAIR

Warm greetings from Art and Global Health Center Africa (ArtGlo)! As we approach the end of another impactful year, it is with great pleasure that I present to you our Annual Report for the year 2022. This report reflects our unwavering commitment to creating a world where communities are healthy, open, and active and individuals are free to be their authentic selves. This report highlights the transformative impact we have collectively achieved in pursuit of our shared vision.

At ArtGlo, our mission is rooted in the belief that vibrant, inclusive, and empowered communities foster personal growth and collective progress. We are dedicated to utilizing the transformative power of the arts to cultivate creative leadership, spark courageous conversations, and drive meaningful action.

Our ongoing collaboration with the various stakeholders has been a source of immense pride and achievement for us. Working in alignment with the Malawi 2063 and the SDGs, we have been able to make significant strides towards our shared vision. By leveraging our participatory arts approaches, we have forged partnerships with organizations possessing strong technical expertise in emerging issue areas. This strategic alliance has not only expanded our reach but also enhanced our proficiency in focus areas where we have garnered substantial experience.

Throughout the year 2022, we have witnessed the positive impact of our programs and initiatives on communities across Malawi. Through our diverse range of projects, we have empowered individuals to express themselves freely, fostering an environment that embraces diversity, inclusion, and self-expression. We have facilitated transformative experiences that have inspired creative thinking, harmonized relations between communities, and encouraged dialogue on pressing social issues.

Our commitment to social change is further demonstrated through our efforts to address key challenges faced by communities. By focusing on areas such as addressing violence against women and girls, empowering local CSOs through trainings in the use of human centered design and participatory arts, engaging health sector stakeholders to address health access disparities being faced by LGBTI people and other minority groups, engaging the youth in secondary schools on SRHR uptake, accessibility and provision, using participatory arts to address GBV in tea and macadamia estates and surrounding areas, engaging primary justice actors to embrace Umunthu and make justice inclusive for LGBTI people and oth-



er minority groups, and partnering with key organisations to unearthed the effects of climate change through umunthu approach and community understanding of loss and damage, and engaging mothers and nurses in Malawi and Zimbabwe on neo and post natal care, we have taken tangible steps towards effecting long-lasting change. Our collaborative approach has allowed us to harness the collective expertise and resources of like-minded organizations, maximizing our impact and creating sustainable solutions.

In the pages of this Annual Report, you will find detailed accounts of our programs, projects, and achievements throughout the year. We have included inspiring stories of individuals whose lives have been transformed, testimonials from our valued partners, and data that showcases the quantitative and qualitative impact of our work. We are immensely grateful for the trust and support you have placed in us, as it is through your generosity and belief in our mission that we are able to bring about positive change.

Looking ahead, we are filled with hope and determination. We remain committed to our mission and will continue to push the boundaries of what is possible through the arts. We aspire to strengthen our existing partnerships, forge new collaborations, and embrace innovative approaches to drive even greater impact in the coming year.

We extend our heartfelt gratitude to our dedicated staff, volunteers, and partners who have worked tirelessly to make our vision a reality. Their passion, creativity, and unwavering commitment have been the driving force behind our success.



We invite you to read our Annual Report and celebrate the achievements we have collectively accomplished. Your continued support and involvement are crucial as we move forward, and we welcome any feedback, suggestions, or ideas you may have to further strengthen our work.



Thank you once again for being an integral part of our journey. Together, we can continue to create a world where communities thrive, individuals are empowered, and the transformative power of the arts brings positive change to the lives of many.

With warm regards,

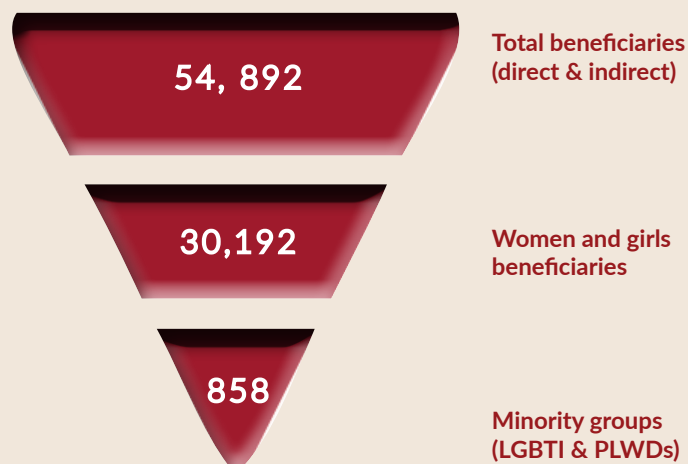
Galia Boneh (Board Chairperson)

and Rodger Kumalire Phiri
(Executive Director).



PROGRAMME OVERVIEW

Gender Justice best signifies our intersectional approach that centres the diverse needs, experiences, and leadership of people most impacted by discrimination and oppression. This approach helps achieve both equity (equal distribution of resources, access, and opportunities) and equality (equal outcomes for all). Gender justice also means the full equality and equity between women and men in all spheres of life, resulting in women jointly, and on an equal basis with men, defining and shaping the policies, structures and decisions that affect their lives and society as a whole. In 2022 we made remarkable progress in our two flagship projects MAWA and Tiyambe. We also partnered with the Malawi Irish Consortium on Ending Gender-Based Violence to develop a toolkit on best practices focusing on GBV prevention in Mulanje district.



MILESTONES

Make Art for Women Activism (MAWA)

The Make Art for Women Activism (MAWA) project, funded by the United Nations Trust Fund to End Violence against Women, was a 3-year initiative aimed at improving the lives of women and girls in Malawi. The project focused on strengthening grass-root Civil Society Organisations (CSOs) by providing training on different areas, such as human-centered design, participatory arts approaches, communications, monitoring and evaluation, and finance. In 2022, the project trained 20 CSO members in Mulanje and Blantyre districts, leading to the formation of new partnerships with various stakeholders and the strengthening of existing ones. The CSO leaders also learned how to access financial support from other organizations and generate income through income-generating activities.

We organised a mental health training for the CSOs in five districts in order to strengthen their capacity to effectively provide psychosocial support to the survivors in the community. The project also had an online cohort closing event in Zomba, where the CSO members expressed their gratitude for the new methodologies they learned, particularly the use of Human Centered Design and participatory arts approaches. In addition, the project organized performances with the MAWA CSOs that were showcased at district events during the 16 days of activism against Gender-Based Violence campaign.

To ensure sustainability, MAWA project conducted a resource mobilization and fundraising training targeting

the 50 CSOs. The training focused on accessing funding opportunities, income-generating activities and mobilization and utilization of locally available resources. The training helped the CSOs understand their own strengths, weaknesses, opportunities, and threats to their resources or existence.

Overall, the project has been successful in improving the capacity and skills of CSOs to advocate and mobilize for change in their communities, leading to positive impacts, such as the revision of the Chinamwali Curriculum and the production of a film to inspire advocacy for human rights. The MAWA CSOs remain committed to the project's mission of creating a better Malawi where women and girls can enjoy their fundamental rights without infringement.



FROM HARM TO HOPE: HOW PARTICIPATORY ART IS EMPOWERING GIRLS IN TA MKHUMBA



In the heart of TA Mkhumba, extreme poverty and lack of child support structures have left women and girls vulnerable to violence. The situation is especially dire for young girls who are being married off early or opting for early marriages for financial gains. As a result, girls are dropping out of school and being exposed to health risks, leading to a wider inequality gap. But one grassroots organization, the Center for Active Youth in Development (CAYODE), is challenging sexual violence against adolescent girls and young women through art and community engagement.

Using the principles of Human-Centered Design (HCD) and participatory arts, CAYODE is addressing harmful cultural practices, norms, behaviours, and attitudes that are causing violence against women and girls in the community. After extensive training through the MAWA project, CAYODE engaged girls, women, chiefs, social welfare officers, district youth officers, and other community members to identify the root causes of violence in their community. Through forum theatre, role-playing, and music, they were able to drive conversations and actions on violence against women and girls (VAWG) issues.

One of the ideas that emerged from these discussions was the establishment of a listening club, a safe

space for girls and women to engage in conversations and influence local by-laws. The project has already made a significant impact on the lives of girls like Esnart, who shared her experience of being a victim of child and early marriages and sexual exploitation. With support from CAYODE, Esnart is using participatory art to raise awareness and challenge the status quo. As part of the project, CAYODE has helped her establish a listening club, which meets every two weeks to share different experiences of violence girls face in the community and map the way forward.

“For a long time, girls in our community have been victims of child and early marriages and sexual exploitation. This has affected our education and limited our future opportunities. The narrative is changing now. With support from CAYODE, we are using participatory art especially music and games that kids play for storytelling to raise our concerns and challenge the status quo”. Explains Esnart

With your support, CAYODE can continue to amplify the voices of girls and women in TA Mkhumba, promote their rights, and help them build a brighter future. Let’s join hands and stand with CAYODE in the fight against violence against women and girls in Malawi.



Tiyambe Project

The Women's Empowerment Initiative by Eastern Produce Malawi (EPM), is a three-year program aimed at promoting gender equality and preventing sexual harassment in the communities surrounding EPM estates in Mulanje and Thyolo districts. As part of this initiative, the Tiyambe project uses Theatre for Development (TfD) to ignite conversations about gender equality and sexual harassment, and to drive change in these communities. In 2022, the project conducted 24 TfD performances and community action planning sessions in 24 different communities surrounding six EPM Estates in Mulanje and Thyolo.

The project began with training community stakeholders in gender equality and TfD to act as change agents in their communities. Then, community youth drama clubs were recruited and trained in TfD and research in each community. The drama club members went into their respective communities to find out the most common challenges to gender equality and the most common forms of violence. Story-lines were developed based on their findings and rehearsals for the performances began. The drama club members were trained in voice projection, audience

participation, miming, stage management, and facilitation of Community Action Plans (CAPs).

The TfD performances were well patronized and engaged the communities in suggesting solutions to the challenges of gender inequality and violence. Community action planning sessions were held the next day after each performance, attended by district and community stakeholders, to evaluate and improve the CAPs.



LIMBULI DRAMA GROUP PARTNERS WITH UNDP TO CURB HUMAN TRAFFICKING



Malawi has been recording an unprecedented increase in cases of Human Trafficking that has robbed the nation's youthful and productive citizens. The vice has also left deep scars on both families and survivors. Rising unemployment among a majority of youth in the country has left them in this trap. The Human Traffickers use this type of desperation and sugar-coat job opportunities to lure more people. The tricksters promise them better work conditions which is contrary to what youth find when they cross the borders with or without proper documentation.

Due to the impact that Limbuli Drama Group, a Tiyambe Project TfD group, left in Mulanje, TA Nje-ma recommended the group to assist in civic educating communities in the UNDP funded Anti-human Trafficking Project.

"As a drama group, we have the urgency to independently organize interventions on different issues apart from GBV. Through TfD, we are currently developing messages on human trafficking that is rampant in our area which borders Mozambique." Expressed Emmanuel Idana, Limbuli Drama club Team lead.

Idana said this in reaction to a five-day training that he attended on behalf of his team where the UNDP is partnering with The Malawi Police and Immigration offices to curb the vice. He further said that the training has helped him know how to identify perpetrators of the vice, some of the human rights and international labour laws, trade and offences.

The training was attended by 45 participants with each given a task to reach out to at least five people daily on voluntary basis. Limbuli Drama Group is the only team which has the ability to hold TfD interventions that can reach hundreds of people in a day.

The group intends to use TfD skills and expertise that they acquired during the Tiyambe project to sensitize and initiate behavior change among communities susceptible to human trafficking and illegal trade around Limbuli.



CHALLENGES

- » Working with LGBTI organizations has been a persistent challenge in the past year. Due to safety and confidentiality concerns, our participants and the people they engage with have not felt free and open to conduct their activities confidently. The laws of Malawi do not support homosexuality, making it difficult for LGBTI groups to license and register to operate as organizations.
- » Cyclones that hit the districts of Mulanje, Phalombe, and Chikwawa has also had significant impact on women and girls, resulting in an increase in various forms of violence including sexual, physical, and psychological abuse. Sexual exploitation was particularly prevalent. To tackle these issues, CSOs used a Human Centered Design and relied on WhatsApp groups and the networks they had established to share innovative solutions.
- » One of the challenges we face is the departure of several CSO leaders who received training, resulting in a shortage of knowledgeable leaders within their respective organizations. It is crucial that we invest in sustainable leadership development programs to ensure that the gains made in gender equality are not lost.

WAY FORWARD

As the MAWA project draws to a close, we urgently call upon donors and partners to support the gender justice program at ArtGlo. We are determined to continue our vital work in empowering communities through the arts and promoting gender equality. To this end, we have intensified our search for grants and partnerships. Our CSO leaders have also been working tirelessly with different stakeholders in their communities to sustain their projects and have even ventured into social enterprise activities to mobilize funds for their programming. We urge you to join us in this critical mission and invest in a future where everyone has the opportunity to thrive.

TESTIMONIES

"Art has the power to change perceptions and transform lives. After watching enlightening plays organized by ArtGlo's Tiyambe project, our misguided beliefs about child marriages and teenage pregnancies were shattered. We realized the advantages of education and made the decision to return to school, even those of us who were already pregnant." Mikundi village girl.

"Thanks to the powerful performance by ArtGlo, my husband's views on my potential changed completely. The play tackled the issue of economic abuse and forced early marriage, which opened his eyes to the negative impact on our family's well-being. I am now able to run my own 'zigege' business and contribute to our household income." - Violet Ligomeka.

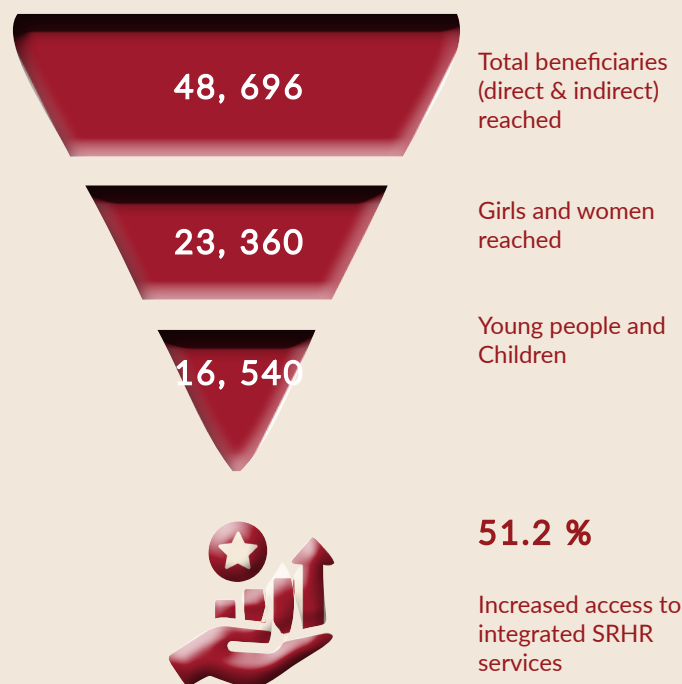
"With Artglo's support, we created a film to empower and inspire health workers, police, and Umunthu projects, advocating unwavering respect for human rights, even among minority groups." - Caleb Muchungu, Alive organization.



YOUTH AND COMMUNITY ENGAGEMENT (YCE)

PROGRAMME OVERVIEW

The “Youth and Community Engagement program” is an initiative that seeks to empower young people and promote community-driven development. The program works with local structures and young people to provide thought leadership, activism, invention, critical conversation, problem solving and much more. In addition, the program encourages youth participation in community development by supporting projects that address local needs such as health, education, and child protection. The program uses innovative approaches such as human-centered design and participatory art to engage young people in discussions on social issues affecting their communities. Through this program, young people are equipped with the skills and knowledge to become agents of change and contribute to the development of their communities.



MILESTONES

MEIRU

We began a project with MEIRU exploring the long term causes and effects of Non-Communicable Diseases (NCDs). We are supporting the gathering of lived experiences. This year we supported an initial study that mapped out participants that would be selected as part of the work. We will use digital media to capture the lived experiences of selected participants in Karonga. The actual work will start in 2023.

Youth- Teacher Dialogue



In 2022, ArtGlo continued working with UNESCO under the O³ Programme, where we gathered evidence on the Comprehensive Sexuality Education

(CSE) in Malawian Secondary schools. After the initial success of the approach, we are working with the MOE to revamp the CSE curriculum in secondary schools. The two, “two-day dialogues”, which took place in Mchinji created a safe space for students and teachers to discuss experiences, lessons learnt and needs for CSE delivery in schools. ArtGlo used different participatory research methodologies including role play, drama, and music which allowed the learning and sharing to be interactive and participant-driven. So far, we have hosted 2 out of the 3 planned sessions, the last session will take place in Nkhatabay in 2023.

Child Protection Project

ArtGlo, with support from UNICEF, is implementing community awareness campaigns for a Child Protection project in four targeted Traditional Authorities (TA) in Lilongwe (Chiseka, Njewa) and Blantyre (Machinjiri, Kuntaja). The project began in September 2022, with workshops and meetings with key district and sub-district structures, in partnership with Development Broadcasting Unit (DBU), World Vision and the respective District Social Welfare offices. The project took a human centered design approach, with its development and execution being led by the com-

YOUTH AND COMMUNITY ENGAGEMENT (YCE)



In February we had two workshops in Zimbabwe targeting 10 mothers at a local health care centre. The first workshop focused on teaching the mothers how to create and share stories about the health care system, digital health and cultural practices using different forms of creative media such as photovoice, film, pictures, drama, songs and poetry. The mothers were given 2 weeks to conduct research and gather creative stories using the practical stories. The second workshop focused on developing and organising the stories based on various themes for an Exhibition that was held in late March. In July we then held a workshop that brought together hospital personnel and mothers to share experience and improve services based on feedback from the exhibition.

community. In October, we conducted four workshops targeting representatives from different community structures including religious leaders, Area Development Committees, TAs, mother groups, lawyers, youth groups, and the police. The aim of the workshops was to facilitate community-led campaigns with the community structures. The children driven campaigns used a wide range of arts approaches such as forum theatre, poetry, music, dance and sports for mass community mobilisation. We had brainstorming sessions where the approach was evaluated and adjustments were made where needed.

Neotree (UCL)

Neotree is an app that measures neonatal health. ArtGlo has been supporting the improvement of neonatal healthcare in the Neotree app through a project that explored the lived experience of mothers and families using digital arts in Malawi (KCH) and Zimbabwe (Chionyi Hospital). This year has seen the completion of the initial work on the Neotree project.



Combating Covid-19 Mis/Disinformation (United Purpose)

With funding from UNICEF, we partnered with United Purpose to tackle Covid-19 misinformation and support vaccination efforts in Malawi. In March, we held four interactive workshops in the districts of Karonga and Chitipa. Two of the workshops were for local journalists, and the other two were for key government officials and community leaders. Through participatory arts methods and Training of Trainers (TOT) sessions, we empowered participants to become ambassadors for accurate information and vaccine awareness.

The journalist trainings brought together local reporters and representatives from the District Health Office (DHO). Over three days, we delved into how to counter Covid-19 misinformation in their reporting.



YOUTH AND COMMUNITY ENGAGEMENT (YCE)

The sessions were lively and engaging, using interactive techniques to spark ideas and inspire action. By the end of the training, the journalists pledged to use their newfound knowledge to improve their reporting and inform the public.

The TOT sessions were designed for district-level personnel working directly on the vaccine campaign and other stakeholders from Area Development Committees (ADCs) and Village Development Committees (VDCs). Building on the journalist training, the TOT sessions explored issues around vaccine misinformation, such as myth-busting and truth-telling. Participants learned how to engage their communities and develop strategies for an upcoming vaccination campaign. By the end of the sessions, the participants had a solid plan of action for spreading accurate information and increasing vaccine uptake in their communities.

Phukusi La Moyo

The project aimed to tackle challenges in accessing integrated services of Sexual and Reproductive Health and Rights (SRHR), Sexual and Gender-Based Violence (SGBV), and HIV/AIDS provided by local Health Centres in Mulanje by using Theatre for Development (TfD). In 2022, stakeholders were trained

in the TfD approach, including two drama groups who identified challenges in accessing services and created a play to highlight them. The play was tested in the community with key stakeholders in attendance, prompting discussions and audience participation. The play addressed issues such as the access to contraceptives for young people being hindered by parents and early child marriages. The performance was adapted to the issues in the local community and an action plan was developed. We conducted nine performances throughout the project. The project brought to light important issues and encouraged the community to come up with solutions. Through the use of TfD, we were able to engage, learn and share knowledge to bring about positive change.



EMPOWERING YOUTH VOICES: HOW ANA PATSOGOLO PROJECT IS BREAKING TABOOS



Alinafe Abraham is a 26-year-old volunteer at Global Aids Interfaith Alliance for the “Ana Patsogolo” project and a member of Tiphunzisane Youth Club. This youth group works to bring young mothers back to school. Alinafe is passionate about making positive change in her community and was excited to be a part of the youths who were trained in this project. She said that what she loved most about being part of the training was that it improved her skills and approach to tackling challenges in her community.

“We have used drama to address different issues before. However, we would just perform and did not necessarily engage with the community during the performance. The training has taught me new ways to deliver a performance that ensures the community is engaged. If I wanted to have a better impact on my community, I should be able to engage them and speak to the issues they are experiencing.” Alinafe explained.

YOUTH AND COMMUNITY ENGAGEMENT (YCE)

The Phukusi La Moyo project's focus was Sexual Reproductive Health and Rights (SRHR) with a particular emphasis on contraceptives. Alinafe shared her excitement concerning the performance and why it was important to have one about SRHR.

"When we went to do research in the community, we found so many misconceptions around contraceptives that led to mothers prohibiting their children from accessing them. We want to change that, and the performance is a creative way of starting that conversation and debunking those misconceptions. We want to show parents that it is alright to have these discussions with their children and that there is nothing wrong with using contraceptives," she said.

The project also helped Alinafe bridge some knowledge gaps she had about SRHR. She realized that promoting SRHR contributes to healthier communities, which is essential for overall development. As for her next steps, Alinafe plans to take the knowledge and skills she learned from the project to her fellow Tiphunzisane youth club members who were not part of the project. She will particularly train them about research and how to conduct a performance that engages the community before, during, and after. She found using participatory arts very interesting, and the quality of knowledge she gained about SRHR and its impact will help her deliver more compelling sessions about the topic to young girls in her community.

PAINTING A BRIGHTER FUTURE: REGINA'S PATH TO MATERNAL HEALTH ADVOCACY



Regina, a mother from Malawi, was part of the Neotree project aimed at improving maternal health. Her daughter, Ivy, was hospitalized at KCH due to complications during birth, and Regina accessed care at the hospital through the Neotree app.

ArtGlo initiated the Neotree project with mothers in Malawi and Zimbabwe to empower women and families to communicate their childbirth and new-

born care experiences. The project aimed to foster dialogue among mothers, health providers, and policymakers to facilitate the co-creation of family-centered and culturally centered care pathways at KCH.

This was to be achieved in three stages. The first stage involved a workshop that utilized participatory arts to elicit perspectives on pregnancy, motherhood, and experiences related to seeking healthcare. "We were unsure at first," recalls Regina. "I didn't know

YOUTH AND COMMUNITY ENGAGEMENT (YCE)

what to expect, but by the end of the first day, we all felt comfortable sharing.”

Each mother used digital media and art to capture their experiences. They then returned to develop their stories and presented them to the hospital staff through a public exhibition. “I used a drawing and a few photos I took to provide feedback on health service delivery at Kamuzu Central Hospital. Although I was uncertain about how it would be received, I was able to share my own experience and that of other mothers at the hospital.”

Regina emphasized the positive and negative aspects of the assistance expectant women receive at KCH. While there is care provided that helps them through the process, there are also equipment issues that hinder the care.

“Sometimes you may weigh your baby in the morning, and they are fine, but by the afternoon, they are underweight. It is really frustrating, and it seemed like nothing was being done about it.”

She finally received a response to this issue during a three-day interface workshop involving the mothers, KCH healthcare professionals, the quality improvement team, and the ombudsman. The workshop facilitated critical reflection on the quality of care issues highlighted within the mothers’ stories and identified priority areas for improvement. It was discovered that equipment issues existed, and in some cases, the scales used had not been replaced for a long time. These and other issues were discussed in the workshop, leading to systematic changes and the enhancement of healthcare in the maternity ward.

Today, Regina leads a support group that periodically visits the hospital, offering advice and comfort to other mothers.

“We greatly benefited from the project. Now, I can help other mothers share their experiences and know that they will be heard because I have been.”

CHALLENGES

- » Lack of long-term funding for the program.
- » Small team which is difficult for larger projects.
- » Short turnover time for most projects.

WAY FORWARD

Looking into the future, we want to strive to continue to improve the use of the methodology to different communities. We would also like to continue to collaborate and expand the use of the Arts in participatory engagement for better communities.



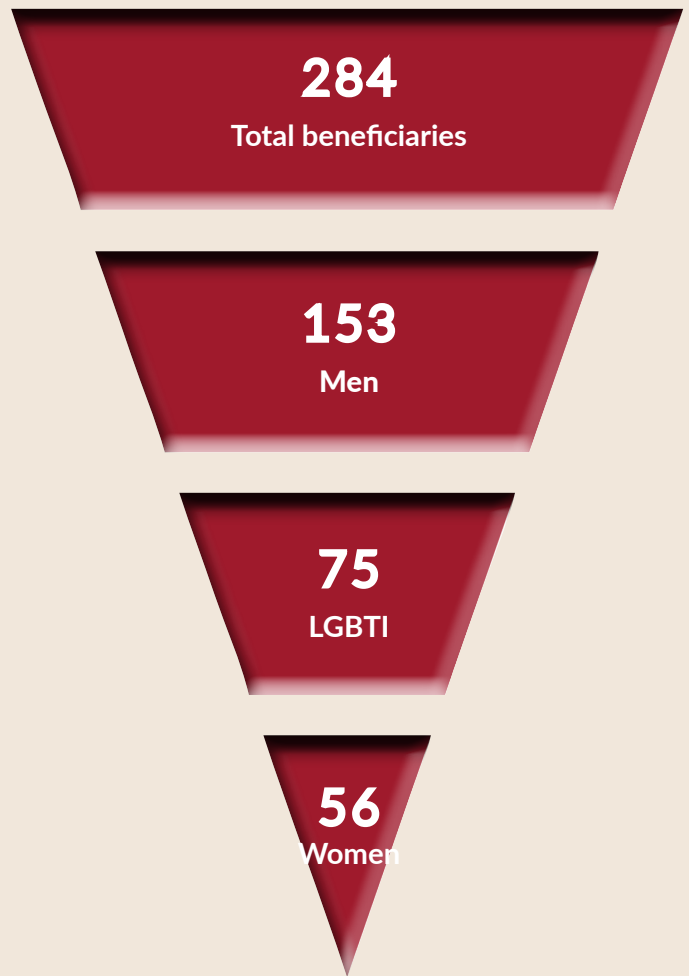
SOCIAL INCLUSION AND DIVERSITY

PROGRAMME OVERVIEW

Our social inclusion and diversity program aims to address differences in public service provision, particularly in the health, justice, and social sectors. At the same time, we're committed to promoting social inclusion and equality for all, grounded in a human rights perspective.

To further these goals, we launched the Umunthu Inclusive Society Project in 2022, which is a two year project funded by Southern Africa Litigation Center (SALC). Our objective is to break down social barriers to enable LGBTI individuals to enjoy their rights and participate freely in various social amenities. We're targeting primary justice actors, including Victim Support Units, Police Officers in training, Lay Magistrates, Community leaders, and Religious leaders.

In 2022, we successfully completed our six-year Umunthu Healthcare Workers Project, which promoted access to healthcare as a fundamental human right for minority groups, including LGBTI individuals in Malawi. This US State Department funded project had several objectives, including reducing stigma and discrimination, building the capacity of civil society and healthcare institutions to advocate for and implement inclusive healthcare service provision, policies, and programs.



MILESTONES

Umunthu Healthcare Workers Project

OBJECTIVE 1

Malawian Health Workers (including Health Worker students) consider and better understand LGBTI persons through the local perspective of the Umunthu Program. They appreciate and act on their responsibilities towards discriminated persons, particularly LGBTI persons.

We held a District Health Management Team (DHMT) members workshop for Nkhotakota and Mchinji Districts. The aim of the workshop was to concretize the gains made on inclusive health services and brainstorm on how best we can sustain them. In attendance we had the Directors for Health and Social Services for both Nkhotakota and Mchinji, District Medical Officers, District Environmental Health Officers, District Nursing Officers, District Human Resources Officers, District Administration Officers,

District Procurements Officers and Pharmacists.



SOCIAL INCLUSION AND DIVERSITY

OBJECTIVE 2

Members of civil society and community leaders engage with healthcare workers to discuss ways to tackle health access disparities in communities.



In the first quarter of 2022, we concluded the Religious and Community leaders' workshops by conducting the final two workshops in the Zomba Jali and Phalombe South Clusters. These workshops involved 10 participants each, comprising senior pastors, senior chiefs, and community leaders, and showcased diverse dynamics in terms of engagement, perceptions, and prior experiences with LGBTI individuals. The Phalombe workshop primarily referred to old publicized cases, while other participants shared a wealth of personal stories that fostered better understanding. Additionally, we conducted visits to 31 health facilities across the seven project districts, engaging with facility officers, LGBTI peer leads, community leaders, and medical officers. These visits aimed to assess the impact of the workshops, evaluate the effectiveness of established systems, and address any challenges. Most districts have shown positive changes and embraced inclusive health service delivery.

OBJECTIVE 3

The workshop activities will be integrated into civil society, educational institutions or government curricula and trainings

We conducted three follow up meeting virtually to find out how the learning from the trainer of trainer's workshops have benefited the Civil Society organizations that participated.

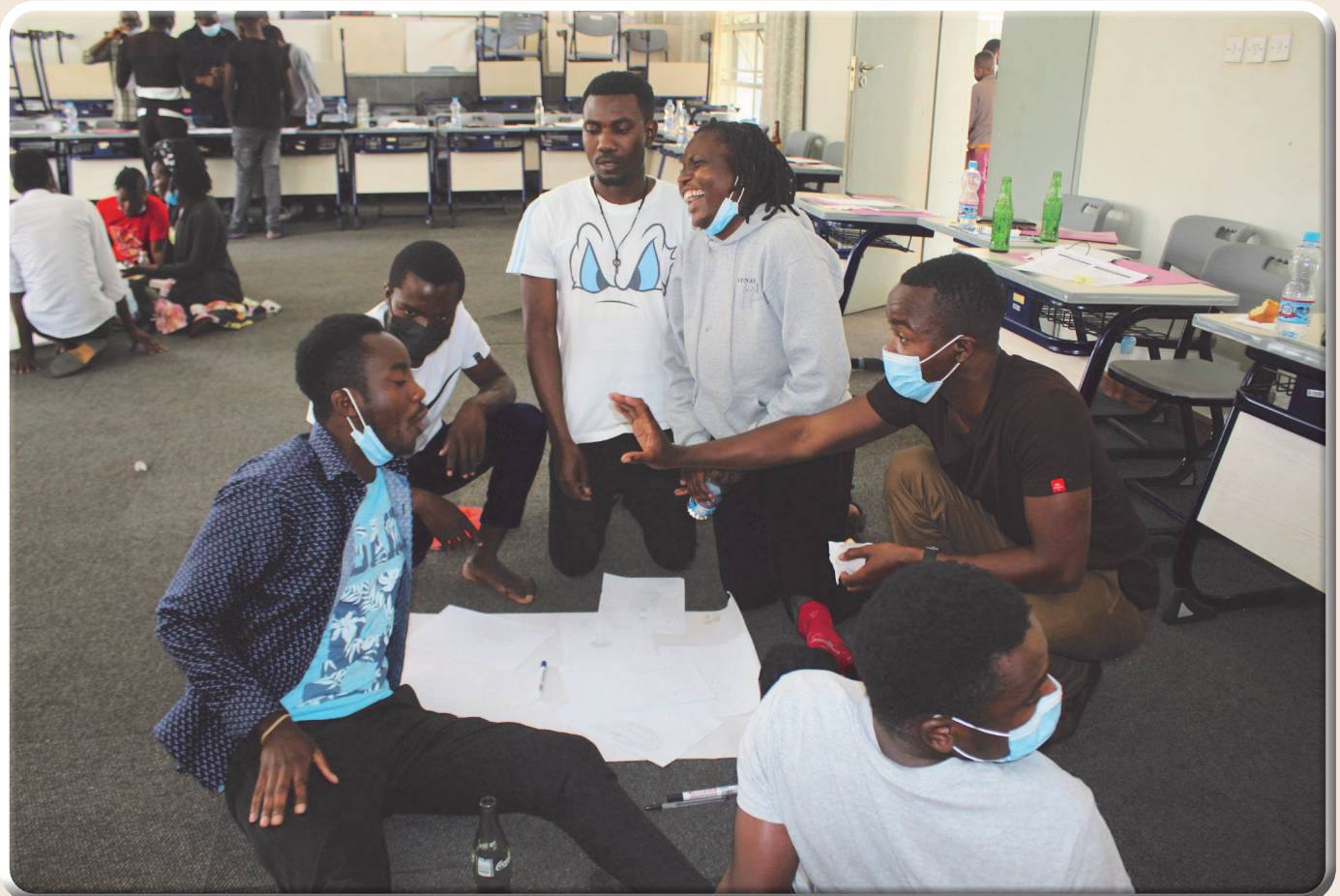
Stakeholder Engagements

ArtGlo was part of the SADC LGBTI Regional Activists Forum in Johannesburg, which brought together activists from 14 SADC countries and regional organizations implementing or supporting LGBTI inclusive projects. We shared about participatory approaches including the use of Umunthu in advocacy, and we were also part of the drafting committee for the SADC Regional Strategic Change Agenda. We also participated in the quarterly Key Population National Technical Working group virtually. The effectiveness of Umunthu workshops for medical and nursing colleges was recognized by the Executive Director of Nyasa Rainbow Alliance, who called upon other implementing partners to learn from the Umunthu project's participatory artistic methodology.



SOCIAL INCLUSION AND DIVERSITY

Umunthu Circle Dialogues



- » We conducted a workshop for medical and nursing colleges institutional leaders and lecturers. We engaged lecturers from 5 Southern Region Colleges namely; Holy Family Nursing College, Trinity College of Health Sciences, Malawi College of Health Sciences, Mulanje Mission Nursing College and St Lukes Nursing College on how best could they modify their curriculum to include Sexual Orientation, Gender Identity and Expression, and health issues that affect LGBTI people.
- » Umunthu lecture for 4th year Christian Ethics students from University of Malawi, Chancellor College where ArtGlo delivered a lecture on the interplay of Umunthu, ethics and christianity in the contemporary world.
- » We engaged 31 students from Trinity College of Health Sciences, LGBTI representative and medical speaker. The aim was to address health access disparities for minority groups with the aim of eliciting empathy and bring awareness of our oneness as people.

SOCIAL INCLUSION AND DIVERSITY

Umunthu Inclusive Society Project (SALC)

We held a curriculum development workshop whose aim was to develop a curriculum for the new project of Umunthu Inclusive Society. An additional aim was to identify a responsive approach which matches the project objectives and lastly, linking the approaches from different sectors to the project objectives. This workshop engaged lay magistrates, human rights activist, LGBTI representatives and police officers.



THE HEALTH CARE CHAMPION'S PERSONAL INFLUENCE TO CHANGE

"I became a champion because I saw that I have the capability to help LGBTI people," responded one of the health care champions from Chikwawa district during brainstorming sessions, when he was asked why he became a champion. "After our orientation, I informed my colleagues that I am now the Umunthu champion. I wanted to honor the trust by the project and I am glad I did just that." The Health Worker's performance as a champion is an outstanding one not only to the project but the LGBTI community members themselves who said, "It was really hard to access condoms at the facility but not anymore. All thanks to Mr. Limited."

"Mr. Limited called for a meeting with us LGBTI members. The purpose of the meeting was to assess service access at the facilities in Ngabu. We told him that we were now free and able to access services at the hospitals but we were having challenges in accessing lubes and condoms." At that time, they

were getting them from the pharmacy and it was really challenging on their part because whenever they would go to get them, they would be asked questions and most of their peers were shying away. It was embarrassing to them.

"When we relayed the challenge to him, he assured us that he will try his best to improve the situation and we are happy to say that he did just that."

Mr. Limited consulted his fellow champion from Chikwawa district hospital who gave him a hand and sent him a few boxes that were to be given to LGBTI people as he was awaiting the next order made by the facility. "What I loved most about him was the zeal in helping us at a time we needed it the most and didn't know who to tell it to," commented one LGBTI lead.

"As we are talking now, we have a system in place that he instituted and we no longer access medical resources through the pharmacy because that was proving to be quite challenging. We get them straight from him or his colleagues when he is not around. This has made health access easy and enjoyable unlike before."

This is a development that highlights his duties as a champion and one that he is so proud of. He shared it only to find out that the LGBTI people are also proud to point out the development as a success too.



CHALLENGES

- » During the discussions, it was observed that people lack knowledge of the constitution and human rights, which makes it easy for law enforcers to violate these without the victims realizing it.
- » Public service officers, such as police, prosecution officers, and some magistrates, were afraid to provide their personal perspectives due to fear of being implicated as it conflicted with the government's stand. A methodology was devised to capture both personal and professional viewpoints and what is applied in practice.
- » There is a lack of data on how often minority groups use social services like health, education, and justice services.
- » Religious leaders lack proper information to base their decisions on how to incorporate or speak for inclusion for LGBTI people. Highlighting the messages of inclusion using the Umunthu philosophy backed by the same biblical verses that speak of forgiveness, non-judgmental tendencies, and inclusion being the same in the eyes of God is possible.
- » The main stakeholders of the project, such as the National AIDS Commission Technical Key Population Technical Working Group, the Department of HIV/AIDS, and the Diversity Forum, have called for scaling up the project to new districts. The project's impact and ease of working with public health service providers have been well noted, and stakeholders, including district health officials in different forums, attest to this. Although efforts have been made to fundraise for scaling up and take advantage of the momentum, experience, and networks achieved so far, funding for the project is still uncertain.

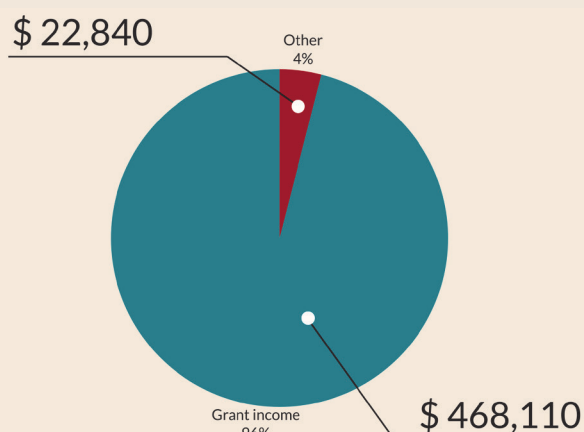
WAY FORWARD

As a programme, we are looking forward to fulfilling the needs of the community (minority groups) especially LGBTI internationally. But also promoting the Umunthu philosophy on continental level so that it can be embedded in Africa fully and people get together socially not just economically. We will also partner with national actors like Ministry of Justice and Unity and other like-minded organisations.



FINANCIAL SUMMARY

INCOME



OUR PARTNERS AND DONORS

On behalf of the men, women, boys and girls that we work with in different communities, we extend a heartfelt vote of thanks to our donors and partners for their unwavering support. Your generous contributions have enabled us to deliver impactful programs and initiatives, which have transformed the lives of many individuals and communities. We are deeply grateful for your continued commitment to our mission, and we look forward to working with you to create a brighter future for all.

Thank you!

EXPENDITURE

- 1 \$ 310,834
- 2 \$ 99,437
- 3 \$ 37,503

- 1 Program expenses
- 2 Personnel expenses
- 3 Admin expenses

SUMMARY

	DOLLARS	MWK
TOTAL INCOME	513,790	504,930,995
TOTAL EXPENDITURE	447,774	441,588,541
BALANCE	66,016	63,342,545

Rate of Exchange

\$ 1 = MWK 1,028.4775

WAY FORWARD

After a successful 2022, we are looking forward to continue harnessing the transformative power of the arts so that our communities are healthy, open and active and people are free to be who they are in 2023.

We finalised our Make Art for Women Activism (MAWA) project, transforming the lives of 30,192 women and girls and targetting 50 CSOs. In 2023, we will be engaging external evaluators to conduct the project endline evaluation study. We will continue scaling up our Tiyambe project in new communities surrounding tea and macademia estates to continue addressing all forms of gender-based violence in these communities.

In 2022, we concluded our Umunthu Healthcare Workers project where we engaged community and religious leaders as well as senior health officials as we promoted good health for all particularly the members of the LGBTQI community. We will be engaging our external evaluator for an endline evaluation in 2023.

We are also excited to have conducted a baseline study for our Umunthu Inclusive Society project. With support from Southern Africa Litigation Centre, we will be implementing this two-year project in Mchinji, Dedza, Chikwawa and Phalombe where we will be engaging primary justice actors, members of the LGBTQI community and their family and friends.

Within our Youth and Community Engagement program, we will continue our partnership with UNESCO in 2023 to scale up Comprehensive Sexuality Education project in schools in Blantyre and Lilongwe. We are also engaging UNICEF and we are expecting to implement Child Protection project in 2023.

We are also exploring the climate justice component and look out for an exciting partnership with Trocaire in this project.

At ArtGlo, we value collaboration. As such, we welcome conversations from organisations and individuals who are interested to collaborate with us. Feel free to get in touch!

SUPPORT US

Your support is what makes it possible to transform the communities we work with. To support us you can;



Donate through our website <https://www.artgloafrica.org/donate>



Explore some exciting volunteering opportunities here:

<https://artgloafrica.org/opportunities/>

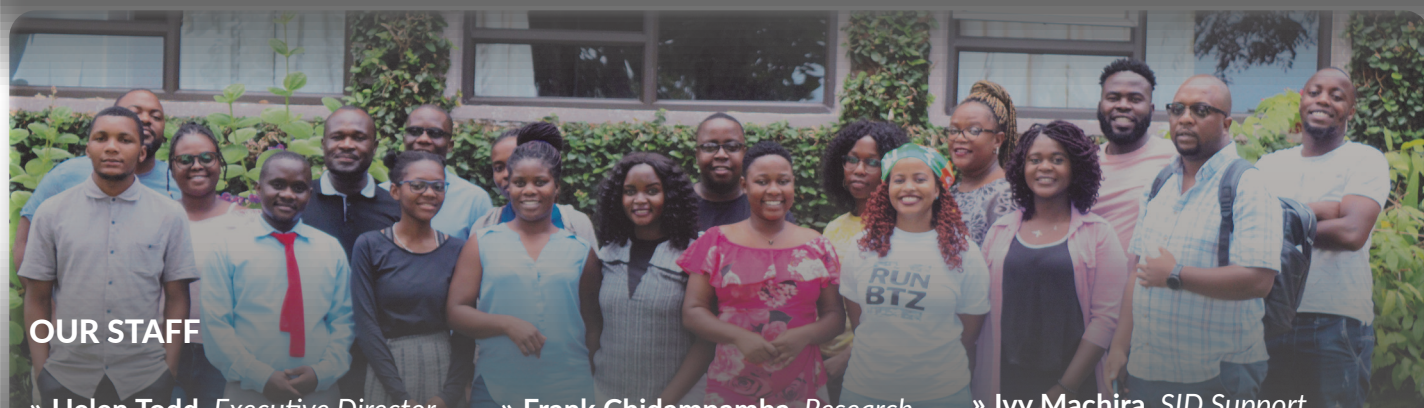


TO THE ARTGLO TEAM

We would like to express our sincere gratitude for your hard work and dedication in 2022. Your passion for creating social change through the arts has been truly inspiring and has had a significant impact on the lives of many individuals and communities. Your tireless efforts have enabled us to achieve our organizational goals and make a positive impact in various areas, including gender equality, education, health, and civic engagement. We recognize that the work we do is challenging and often emotionally taxing, but your commitment to the cause and unwavering support have enabled us to overcome these challenges and continued making a difference.

Your creativity, resilience, and willingness to go above and beyond to achieve our objectives have been invaluable. We appreciate your contributions towards making ArtGlo a dynamic, innovative, and impactful organization. We look forward to continuing our journey together and achieving even greater successes in the future.

Thank you for your hard work, dedication, and commitment to social change through the arts.



OUR STAFF

- » **Helen Todd**, Executive Director
- » **Wilson Chivhanga**, Executive Director
- » **Rodger Kumalire Phiri**, SID Programme Manager
- » **Bosco Chinkonda**, Research and Operations Manager
- » **Lekodi Magombo**, YCE Programme Manager
- » **Sharon Kalima Nkhwazi**, Gender Justice Programme Manager
- » **Deliwe Kasakala**, Finance and Operations Manager
- » **Stella Machado**, Finance and Operations Assistant
- » **Chawanangwa Ethan Nyirenda**, Communications and Partnerships Officer
- » **Esther Harawa**, Tiyaambe Project Officer
- » **Chisomo Liwimbi**, SID Programme Officer
- » **Caroline Luka**, Mawa Project Assistant
- » **Effie Mgala**, Mawa Project Assistant
- » **Frank Chidampamba**, Research and Evaluation Fellow
- » **Ruth Mughogho**, Communications Fellow
- » **Enelles Gama**, YCE Programme Assistant
- » **Precious Phiri**, Finance and Operations Assistant
- » **Eva Mihalik**, Monitoring Evaluation and Learning Advisor (WUSC)
- » **Laura Ligomeka**, SID Programme Support
- » **Cynthia Grace Kumbanga**, Monitoring Evaluation and Learning Support
- » **Florence Simbota**, Monitoring Evaluation and Learning Officer
- » **Vitumbiko Gwambaike**, Tiyaambe Project Assistant
- » **James Kumdana**, Research and Resource Mobilization Advisor (WUSC)
- » **Chiyembekezo Noel Kapitapita**, Communications Support
- » **Andrew Khayako**, YCE Intern
- » **Tamika Mulenga**, Finance and Operations Intern
- » **Ivy Machira**, SID Support
- » **Chimwemwe Zalanje**, MAWA Intern
- » **Love Msoso**, Communications Intern
- » **Daphne Langwe**, Monitoring and Evaluation Support
- » **James Sande**, Office Assistant

OUR BOARD

- » **Galia Boneh**, Board Chairperson
- » **David Gere**
- » **Isabel Kumwembe**
- » **Chimwemwe Fabiano**
- » **Yolanda Ngoma**
- » **Madalo Banda**
- » **Tresor Nzengu Mpauni**

OUR ADVISORS

- » **Maryan Taylor Brown**
- » **Hayley Kellenberg**
- » **Sharida Hassan**
- » **Helen Todd**
- » **Rodney Likaku**



@artgloafrica



@artgloafrica



@artgloafrica



@artgloafrica



@aghcafrica

Art & Global Health Center Africa
(ArtGlo)
P.O. Box 607,
Kalimbuka, Zomba,
Malawi.

<https://www.artgloafrica.>